

# ***CHAMPION***

L07-L22 (10-30 HP)  
FIXED-SPEED ROTARY SCREW COMPRESSORS

## L Series



# Advanced Technology Inspired Simplicity

## A Better Approach

Champion has a long history of manufacturing compressed air equipment. With our L Series line of products, we have uniquely combined ***simplicity*** with ***cutting edge design***.

The result—a compressor that delivers outstanding performance with unprecedented serviceability.





## The Total Package

Champion has the total package—extensive compressor and air treatment product lines, sales and service support through our extensive network of authorized local distributors, and industry leading warranty programs. Because we offer more than just compressed air equipment, we can provide solutions that keep you running, protect your production objectives and save you money.



# A Whole New Level of Serviceability

Designed with the customer in mind, all L Series compressors feature a clean, simple and intuitive layout. The “advanced but simple package design” ensures first-class serviceability by:

- Lowering maintenance and service costs
  - Reduced number of external hoses and components to maintain
  - Automatic belt tensioning system provides correct belt tension and longer belt life
- Lengthening service life
  - Superior long-life components ensure excellent compressed air quality
  - Combination air/oil cooler design eliminates unnecessary wear and condensate in the compressor system
- Limiting down time
  - Quick access to grouped service components behind a lift-off canopy

Experience the difference of a truly **service-friendly** compressor








Easy to Navigate,  
**Compact Packages**

# Small Footprint or Superior **Serviceability?**


Achieve the best of both worlds with Champion's L Series Compressors. The integrated design eliminates unneeded connections and minimizes piping; allowing the footprint of the package to be reduced without overlooking the importance of serviceability.



Lower installation costs



Increased flexibility when determining installation location



Ability to more easily handle and move machines

Small Footprints = **Cost Savings**

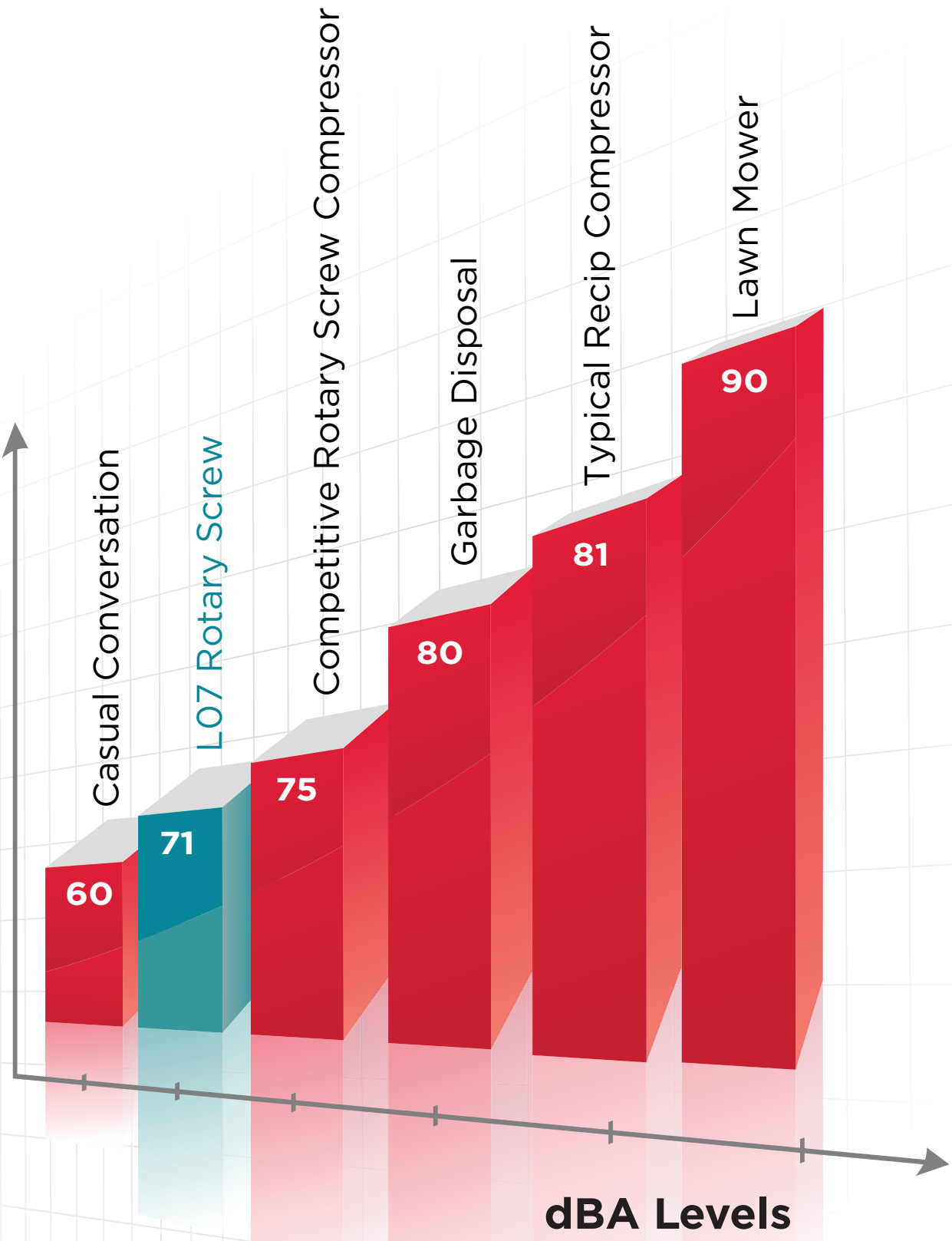
Without sacrificing serviceability, the L Series compressor packages feature some of the smallest footprints in the industry.



## Nearly **Silent** Noise Levels

The Champion L Series compressor designs feature high-quality, sound-insulating enclosure panels and a low-noise, thermostatically-controlled, motor-driven fan. These components reduce the noise to whisper-quiet levels and eliminate the need for a separate compressor room, saving money on installation costs.

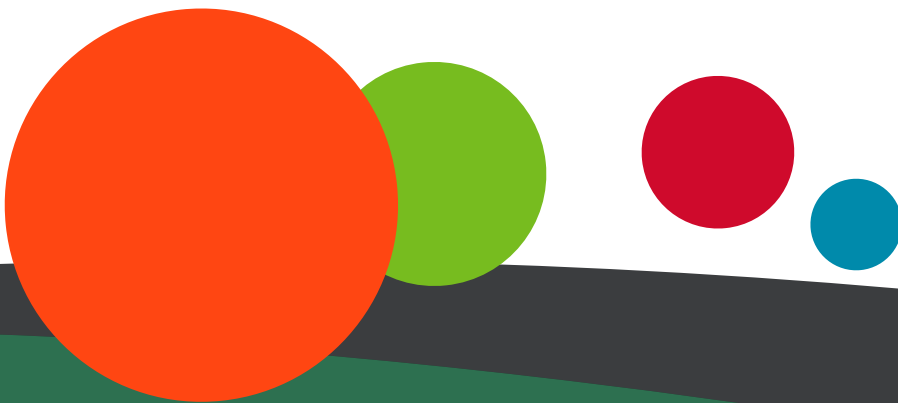




# The Complete Package

Champion's AirStation is a complete air system in one package. Using a fully integrated rotary screw compressor, tank-mounted with optional dryer, the AirStation is a true "plug and play" compressed air solution.

By mounting the components on the receiver, the **FOOTPRINT** required for installation is **REDUCED BY MORE THAN 50%**





L22

AIR STATION

# It's All In The Details



Every component on the L Series AirStation was designed with the end user in mind. From the zero air-loss automatic tank drain to the integrated forklift slots, we paid attention to the details.



The three way bypass valve allows for dryer maintenance while the compressor is running and corrosion-resistant stainless steel air supply piping minimizes the chance for costly leaks.



The optional refrigerated dryer guarantees top performance with low pressure losses. Our optional integrated cold coalescing filter delivers a 20-25% reduction in oil content compared to a standard dryer with an external afterfilter.

- Integrated Grade B filter standard



# Stay Focused on What Is **Important**

Compressors are more than just a financial investment. They are a key component in ensuring that you, as a manufacturer, processor and operator, receive consistent, high quality low cost air. Champion uses the latest design techniques to develop a compressor that focuses on the three most important aspects of a compressor.

**Reliability. Performance. Value.**





Integrated Oil Separator

Integrated Thermostatic Bypass Valve

Fewer Hose Connections

Integrated Air Filter

Integrated Oil Filter

Connections

Low Rotational Speeds

# RELIABILITY

Reduced Number of Components

Fail Safe Shaft System

Fully Integrated Aired Industrial Grade Components



Market Leading Energy Savings

High Efficiency TEFC Motor

Minimal Pressure Drop

# VALUE

Lowest kW/100 CFM

Superior Specific Power

Low Life Cycle Costs

# Get in Touch with the **Next Generation** of Compressor Controllers

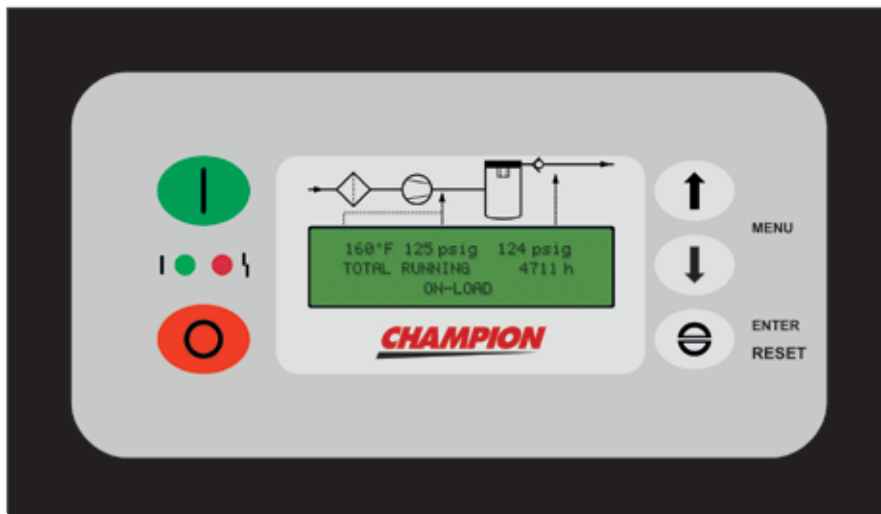
Champion completes its industry leading compressor packages with the state-of-the-art dual position Pilot controller. Featuring advanced software and an easy to use interface, the Pilot controller provides and displays an extensive amount of data on the operation of your compressor.



# Built-In **Intelligent** Controls

## Pilot Controller Features

- Real time clock
- Second pressure setting
- Discharge/line/network pressure data displayed
- Advanced fault history log
- Programmable inputs and outputs
- Auto restart after power failure
- RS485-Modbus RTU Standard



# Best Warranty in the Industry

## Experience Peace of Mind

Champion's engineering philosophy ensures long-lasting, reliable equipment. Our simple, but bold warranty programs demonstrate our belief in the quality found in Champion compressors.

Our standard warranty ensures that you have peace of mind when it comes to your system's operation. For added protection, take advantage of our 10 year extended warranty program. Simply stated, it's the best in the industry.



Superior Support  
at a Local Level


# Sales & Service **Distributors** Across America

## **An Extensive Network**

By leveraging the extensive network of Champion's factory-trained authorized local distributors, your sales, service and technical support needs can be handled quickly and easily. Keeping your compressors maintained and adequately serviced has never been simpler.



To find a distributor visit:  
<http://championpneumatic.com>



# Keeping the System Healthy

## Factory-Specified Parts & Accessories

Each and every part that goes into a Champion compressed air system is tested and approved by our world-class Engineering team. Don't trust some faceless pirate to supply the vital parts and accessories that keep your compressed air system healthy. Where will they be when their knock-off parts cause problems for your operation?

## Service Components

Oil filters, separators and air filters are specified and designed into a Champion compressor as part of the total package. Replacing these components with genuine Champion parts ensures that your compressed air system remains a total package.

## Replacement Parts

Champion air compressor parts have tolerances as low as one-ten-thousandths of an inch. Keep that in mind as you decide where to purchase your replacement parts.

Ensure your compressed air  
system remains a **total package**



# Lubricant Solutions

## Meeting Demands

Also known as the “lifeblood” of the air compressor, choosing the correct lubricant is vital in maximizing efficiencies and equipment longevity. Whatever your application, there is a Champion lubricant formulated to meet your demands, head-on.



High Temperatures Semi-Synthetic  
**SYNTHETIC**  
Food Grade High Performance

# Technical Data

## L07-L22 SCREW COMPRESSOR, 60 HZ

MODEL	NOMINAL PRESSURE		DRIVE MOTOR		FAD <sup>1</sup>		NOISE LEVEL <sup>2</sup> DB(A)	WEIGHT		DIMENSIONS L x W x H IN. (MM)
	PSIG	BAR	HP	KW	CFM	M <sup>3</sup> /MIN		LBS	KG	
L07	100 125 190	6.9 8.6 13	10	7	45 39 26	1.27 1.10 0.74	71	452	205	27 x 25 x 41 (686 x 635 x 1041)
L11	100 125 190	6.9 8.6 13	15	11	63 58 44	1.78 1.64 1.25	71	483	219	27 x 25 x 41 (686 x 635 x 1041)
L15	100 125 190	6.9 8.6 13	20	15	89 83 63	2.52 2.35 1.78	73	739	335	31 x 28 x 47 (787 x 711 x 1194)
L18	100 125 190	6.9 8.6 13	25	18	111 102 80	3.14 2.89 2.27	74	796	361	31 x 28 x 47 (787 x 711 x 1194)
L22	100 125 190	6.9 8.6 13	30	22	126 117 92	3.57 3.31 2.61	74	810	367	31 x 28 x 47 (787 x 711 x 1194)

1) Data measured and stated in accordance with ISO1217, Ed. 4, Annex C & Annex E at the following conditions:  
Air Intake Pressure 1 bar A, Air Intake Temperature 20° C, Humidity 0% (Dry)

2) Measured in free field conditions in accordance with ISO 2151, tolerance +/- 3 dB

## TOTAL SYSTEM

MODEL	DRYER MODEL	RECEIVER SIZE GAL. (LITERS)	REFRIGERANT	WEIGHT LBS (KG)		DIMENSIONS L x W x H IN. (MM)	
				80 GAL.	120 GAL.	80 GAL.	120 GAL.
L07	CRN50	80 & 120 (303 & 454)	R-134A	Less Dryer 882 (400) With Dryer 922 (418)	Less Dryer 905 (411) With Dryer 995 (451)	Less Dryer 52 x 32 x 68 (1321 x 813 x 1727)	Less Dryer 73 x 32 x 68 (1854 x 813 x 1727)
L11	CRN75	80 & 120 (303 & 454)	R-134A	Less Dryer 853 (387) With Dryer 1104 (501)	Less Dryer 936 (425) With Dryer 1188 (539)	With Dryer 63 x 32 x 68 (1600 x 813 x 1727)	With Dryer 72 x 32 x 68 (1829 x 813 x 1727)
				120 GAL. ONLY		120 GAL. ONLY	
L15	CRN100 CRE90	120 (454)	R-134A	Less Dryer 1194 (542)	With Dryer 1505 (683) With Dryer 1503 (682)	Less Dryer 73 x 32 x 74 (1854 x 813 x 1880)	
L18	CRN125 CRE120	120 (454)	R-134A	Less Dryer 1251 (567)	With Dryer 1584 (714) With Dryer 1569 (712)	With Dryer 80 x 32 x 74 (2032 x 813 x 1880)	
L22	CRN150 CRE140	120 (454)	R-134A	Less Dryer 1265 (574)	With Dryer 1604 (728) With Dryer 1588(720)		

# Technical Data

## L07-L22 SCREW COMPRESSOR, 50 HZ

MODEL	NOMINAL PRESSURE		DRIVE MOTOR		FAD <sup>1</sup>		NOISE LEVEL <sup>2</sup> DB(A)	WEIGHT		DIMENSIONS L x W x H IN. (MM)
	PSIG	BAR	HP	KW	CFM	M <sup>3</sup> /MIN		LBS	KG	
L07	110 145 190	7.5 10 13	10	7	46 37 30	1.3 1.06 0.85	70	452	205	26 x 25 x 41 (667 x 630 x 1050)
L11	110 145 190	7.5 10 13	15	11	64 57 47	1.82 1.61 1.32	70	483	219	26 x 25 x 41 (667 x 630 x 1050)
L15	110 145 190	7.5 10 13	20	15	95 80 64	2.70 2.26 1.80	70	739	335	31 x 27 x 47 (787 x 698 x 1202)
L18	110 145 190	7.5 10 13	25	18	115 97 83	3.25 2.74 2.34	71	796	361	31 x 27 x 47 (787 x 698 x 1202)
L22	110 145 190	7.5 10 13	30	22	129 113 92	3.65 3.21 2.61	71	810	367	31 x 27 x 47 (787 x 698 x 1202)

1) Data measured and stated in accordance with ISO1217, Ed. 4, Annex C & Annex E at the following conditions: Air Intake Pressure 1 bar A, Air Intake Temperature 20° C, Humidity 0% (Dry)

2) Measured in free field conditions in accordance with ISO 2151, tolerance +/- 3 dB

## TOTAL SYSTEM

MODEL	DRYER MODEL	RECEIVER SIZE GAL. (LITERS)	REFRIGERANT	WEIGHT LBS (KG)		DIMENSIONS L x W x H IN. (MM)	
				80 GAL.	120 GAL.	80 GAL.	120 GAL.
L07	CRN50	80 & 120 (303 & 454)	R-134A	Less Dryer 882 (400) With Dryer 922 (418)	Less Dryer 905 (411) With Dryer 995 (451)	Less Dryer 52 x 32 x 68 (1321 x 813 x 1727)	Less Dryer 73 x 32 x 68 (1854 x 813 x 1727)
L11	CRN75	80 & 120 (303 & 454)	R-134A	Less Dryer 853 (387) With Dryer 1104 (501)	Less Dryer 936 (425) With Dryer 1188 (539)	With Dryer 63 x 32 x 68 (1600 x 813 x 1727)	With Dryer 72 x 32 x 68 (1829 x 813 x 1727)
				120 GAL. ONLY		120 GAL. ONLY	
L15	CRN100 CRE90	120 (454)	R-134A	Less Dryer 1194 (542)	With Dryer 1505 (683) With Dryer 1503 (682)	Less Dryer 73 x 32 x 74 (1854 x 813 x 1880)	
L18	CRN125 CRE120	120 (454)	R-134A	Less Dryer 1251 (567)	With Dryer 1584 (714) With Dryer 1569 (712)	With Dryer 80 x 32 x 74 (2032 x 813 x 1880)	
L22	CRN150 CRE140	120 (454)	R-134A	Less Dryer 1265 (574)	With Dryer 1604 (728) With Dryer 1588(720)		

The leader in every market we serve  
by continuously improving all business processes  
with a focus on innovation and velocity

**CHAMPION**

1301 North Euclid Avenue  
Princeton, Illinois 61356 USA  
[www.ChampionPneumatic.com/ContactUs.aspx](http://www.ChampionPneumatic.com/ContactUs.aspx)  
866-276-4330  
[www.ChampionPneumatic.com](http://www.ChampionPneumatic.com)

