

7,000 LBS. CAPACITY (3175kg)

www.rotarylif.com



AT07

SPACE SAVER TWO-POST LIFT

Performance and Productivity

Rotary's AT07 2-Post lift offers maximum drive-through clearance with minimum external dimensions. The asymmetrical design of the posts and supporting arms also provides a spacious pick-up area, allowing the lift to be entered from either side.



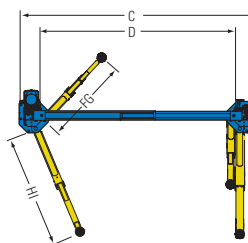
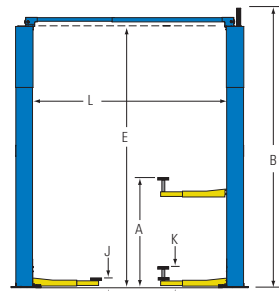
Asymmetric design allows for open door clearance.



Model: AT07
7,000 lbs. capacity
(3175 kg)

Specifications

Model:	AT07
A. Rise	73-7/8" (1877 mm)
B. Height Overall	11' 8-1/2" (3569 mm)
C. Width Overall (outside of base plate)	10' 2-7/8" (3120 mm)
D. Drive-Thru Clearance	92" (2336 mm)
E. Floor To Overhead Switch	134-3/8" (3414 mm)
F. Reach (front arm min.)	21-5/8" (550 mm)
G. Reach (front arm max.)	43-1/2" (1105 mm)
H. Reach (rear arm min.)	34-1/2" (877 mm)
I. Reach (rear arm max.)	58" (1473 mm)
J. Min. Adapter Height	3-5/8" (92 mm)
K. Max Adapter Height	5-7/8" (149 mm)
L. Inside Columns	100-3/4" (2560 mm)
Capacity	7000 lbs (3175 kg)
Motor	2HP
Voltage	1PH/60HZ/208-230V 3PH/50-60HZ/380-460V
Time of Full Rise	45 seconds (1 PH)
Ceiling Height Required	12' (3660 mm)
4 Stackable adapters	90mm
4 Stackable adapters	130mm



Rotary World Headquarters
2700 Lanier Drive
Madison, IN 47250, USA
www.rotarylif.com

Contact Information

Sales: p 800.640.5438
f 800.578.5438
e userlink@rotarylif.com
Tech. Support: p 800.445.5438
f 800.822.6502
e userlink@rotarylif.com



Lit# Rotary_AT07_Cutsheet_2014.03
©2014 VEHICLE SERVICE GROUP™, Printed in U.S.A., All Rights Reserved.
Unless otherwise indicated, ROTARY LIFT, VEHICLE SERVICE GROUP™, DOVER
and all other trademarks are property of Dover Corporation and its affiliates.