

# SM30 30,000 LBS. CAPACITY RUNWAY LIFT

**SERVICE A VARIETY OF VEHICLES WITH MAXIMUM PRODUCTIVITY**

## Heavy-Duty 30K Four Post Drive-On Lifts - Service Wheelbases Up To 307"

Take heavy duty lift service to the next level with this four-post designed without side obstructions and better vehicle access. With a 68" lifting height, the SM30 clear floor design allows technicians room to access tool boxes and other shop equipment increasing productivity and reducing downtime. Plus, the single point air-lock release releases all four spring loaded column locks at one time adding greater productivity. Numerous accessories turns this lift into a complete service solution for any shops' needs. These lifts handle cars, vans, trucks - even light and medium duty commercial vehicles with ease. If you service a wide variety of vehicles, Rotary 30,000 lbs. capacity four-post auto lifts are the right choice for maximum productivity.



Shown: SM30N0-X  
30,000 lbs. capacity  
with optional rolling jacks

## RAISE YOUR FORKLIFT TO NEW HEIGHTS!

# RFL25

## 25,000 LBS. CAPACITY FORKLIFT SERVICE LIFT

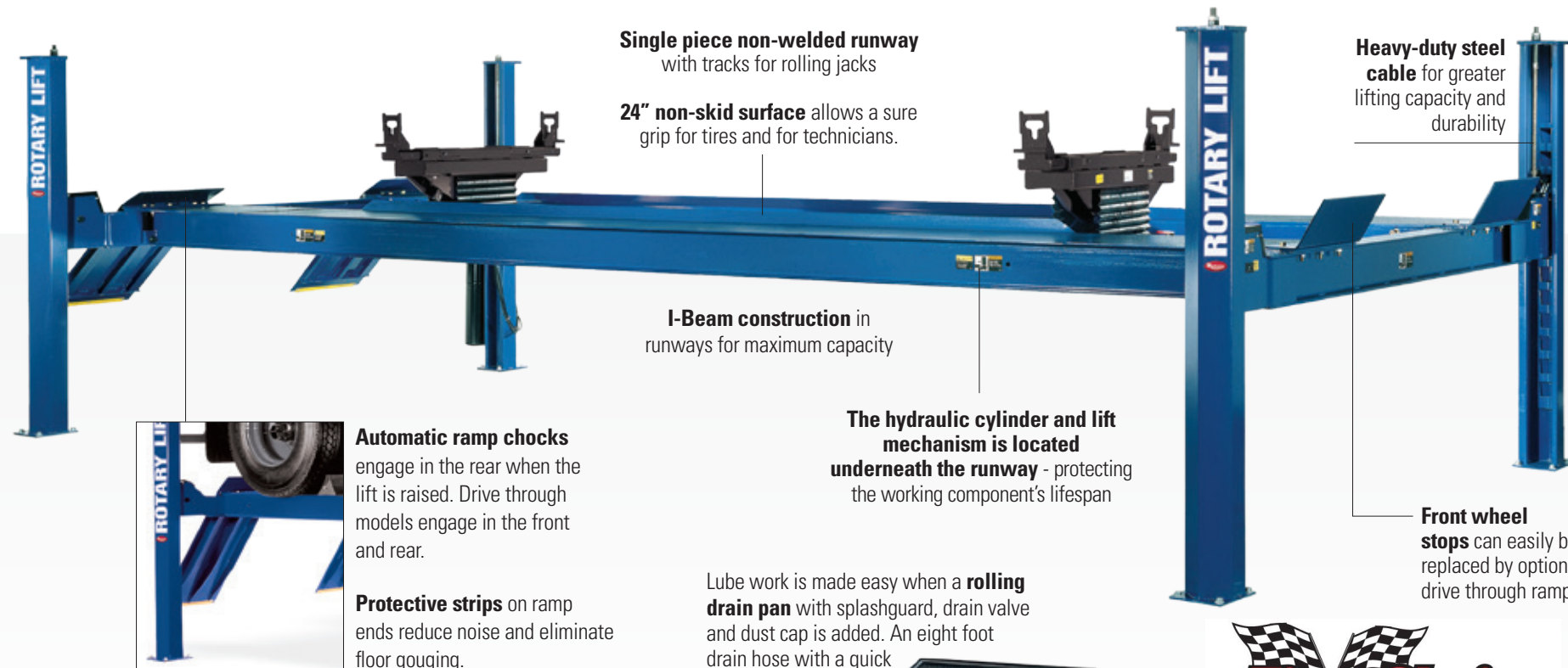
### Features

- Single point release air-locks
- Automatic ramp chocks
- Drive through models
- ALI / ETL Certified



Shown: RFL25  
Fork Lift Model  
25,000 lbs. capacity

**CONSULT FACTORY FOR DETAILS**



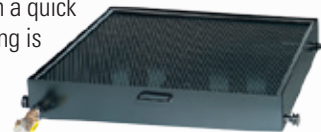
**Single piece non-welded runway**  
with tracks for rolling jacks

**24" non-skid surface** allows a sure grip for tires and for technicians.

**I-Beam construction** in runways for maximum capacity

**The hydraulic cylinder and lift mechanism is located underneath the runway** - protecting the working component's lifespan

Lube work is made easy when a **rolling drain pan** with splashguard, drain valve and dust cap is added. An eight foot drain hose with a quick disconnect fitting is also available.



#FC5968BK  
SM300 series, 30 gallon capacity

**Heavy-duty steel cable** for greater lifting capacity and durability

**Front wheel stops** can easily be replaced by optional drive through ramps

**Optional rolling jacks** with a variety of adapters lift front, rear or all wheels off the runways for brake, tire, alignment and suspension work. When idle, the jacks roll out of the way to provide unobstructed workspace between runways.



Shown: RJ9000Y-2BK

**Standard Internal airline connections** let two rolling jacks operate simultaneously.

**Alignment Capable Lift**  
Convert the SM30 into a fully functioning alignment lift by adding an alignment kit. Bolt-on kits include front turning radius gauge kits and rear slip plates.

## Rotary DESIGN ADVANTAGE

# SM30 Four-Post

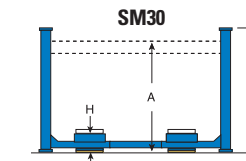
### PRODUCTIVITY & PERFORMANCE

1. PATENTED SENTINEL LOCKING SYSTEM
2. MULTIPLE RUNWAY LENGTHS
3. ADJUSTABLE RUNWAY SPACING
4. THIRD-PARTY ETL GOLD CERTIFIED

### SM30 LIFT SPECIFICATIONS

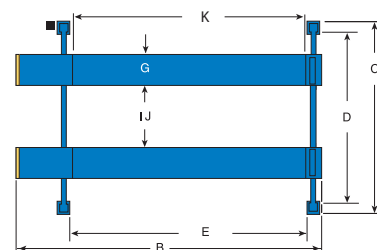
Model:	SM30S SM30L SM30EL
Maximum Wheelbase*	<b>S</b> 235" (5969mm) <b>L</b> 271" (6883mm) <b>EL</b> 307" (7798mm)
A. Rise / Floor to top of runway	68" (1727mm)
B. Length Overall	<b>S</b> 25' 8 1/8" (7826mm) <b>L</b> 28' 8 1/8" (8741mm) <b>EL</b> 31' 8 1/8" (9655mm)
C. Width Overall	12' 6" (3811mm)
D. Inside of Columns	133" (3378mm)
E. Between Columns	<b>S</b> 249" (6325mm) <b>L</b> 285" (7239mm) <b>EL</b> 321" (8153mm)
F. Height of Columns	7' 3/4" (2153mm)
G. Width of Runways	24" (610mm)
H. Height of Runways	8 3/4" (222mm)
I. Width Between Runways (min.)	42" (1067mm)
J. Width Between Runways (max.)	48" (1219mm)
K. Length of Runways	<b>S</b> 248 1/2" (6312mm) <b>L</b> 284 1/2" (7226mm) <b>EL</b> 320 1/2" (8141mm)
Lifting Capacity	30,000 lbs. (13608kg)
Motor	4 HP
Voltage Single Phase †	208v-230v
Time of Full Rise	105 seconds
Min. Bay Size	<b>S</b> 16' x 30' (4877 x 9144mm) <b>L</b> 16' x 33' (4877 x 10059mm) <b>EL</b> 16' x 36' (4577 x 10973mm)

**S** = Shorter length **L** = Standard length **EL** = Extended length



† Optional 3-phase electrical available

Standard color of lifts are blue and red. Additional colors maybe available - consult your Rotary® representative for details and pricing.



Shown: SM30N0-X  
30,000 lbs. capacity with optional rolling jacks



2212 Camplain Road  
Hillsborough, NJ 08844  
1-888-8FC-LIFT