

HOME ENTHUSIAST

DO IT YOURSELF AND LIGHT-DUTY COMMERCIAL SERVICE

Challenger's 7,000 lb. capacity and 9,000 lb. capacity 4-post garage lifts were designed with versatility in mind. From home enthusiast and commercial storage applications to light-duty general service applications, these lifts complement your service needs and are loaded with real benefits. They are essential for the "do it yourself" home garage, providing the best of both worlds — store a vehicle up top and below with up to 80" of clearance when the lift is fully raised, or use this lift to service your vehicles.

CL4P9X

9,000 LB. CAPACITY

- » Home/commercial
4-post lift



2212 Camplain Rd., Hillsborough, NJ 08844
Call for Sales, Service, & Installation
www.fclift.com 908.526.1500

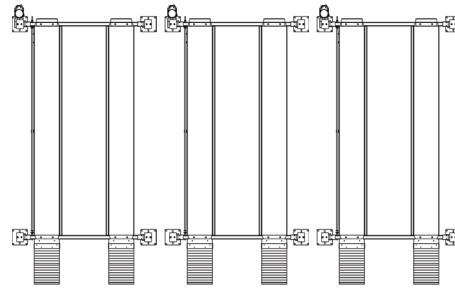
CL Challenger Lifts

Louisville, Kentucky



STORAGE APPLICATION

It's the best of both worlds. Service your vehicles or store them up top. With as much as 80" in rise height, most full size vehicles are easily parked underneath for everyday use. Optional drip tray set completes the storage application, keeping any fluids from contacting the vehicle underneath.



Multiple unit storage lifts available with full CAD layout support

SERVICE APPLICATION

Professional grade quality with multiple lock positions is perfect for light duty service up to 9,000 lb. capacity. Optional rolling jacks and jack trays provide quick tire and brake work access.

OPTIONAL ACCESSORIES



ROLLING JACKS

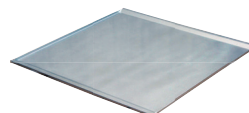
3,500 lb. or 4,500 lb. capacity rolling jacks
RJ3.5, RJ4.5

Air/hydraulic pump kit
RJ04-PK

DRIP TRAYS



Plastic drip tray set (set of 4)
CL4P9DTP



Stainless drip tray set (set of 3)
CL4P9DT

JACK TRAY



4,500 lb. capacity jack tray
CL4P9JT

STORAGE/LIGHT DUTY SERVICE LIFT

Challenger's 7,000 lb. capacity and 9,000 lb. capacity 4-post lifts are perfect for home garage, commercial storage and light-duty general service applications. Bolt it down or leave it free standing to relocate it anywhere. Multiple height, length and width models are available to provide unlimited options for the DIY enthusiast. With optional rolling jacks, ramp upgrades, oil drain pans and other accessories, you'll be able to accommodate just about anything that comes in your garage and afford room to grow with its reasonable cost. Available in black only.

A STEP ABOVE

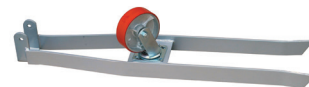
- » Larger cables meet the 5:1 safety standard required for ALI certification
- » Adjustable lock ladder ensures that runways are level when they are locked in a garage with normal slope
- » Commercial grade formed runways ensure a strong, stable unit
- » Manual lock system on front and rear cross beam comes pre-installed from the factory
- » Air not required for operation



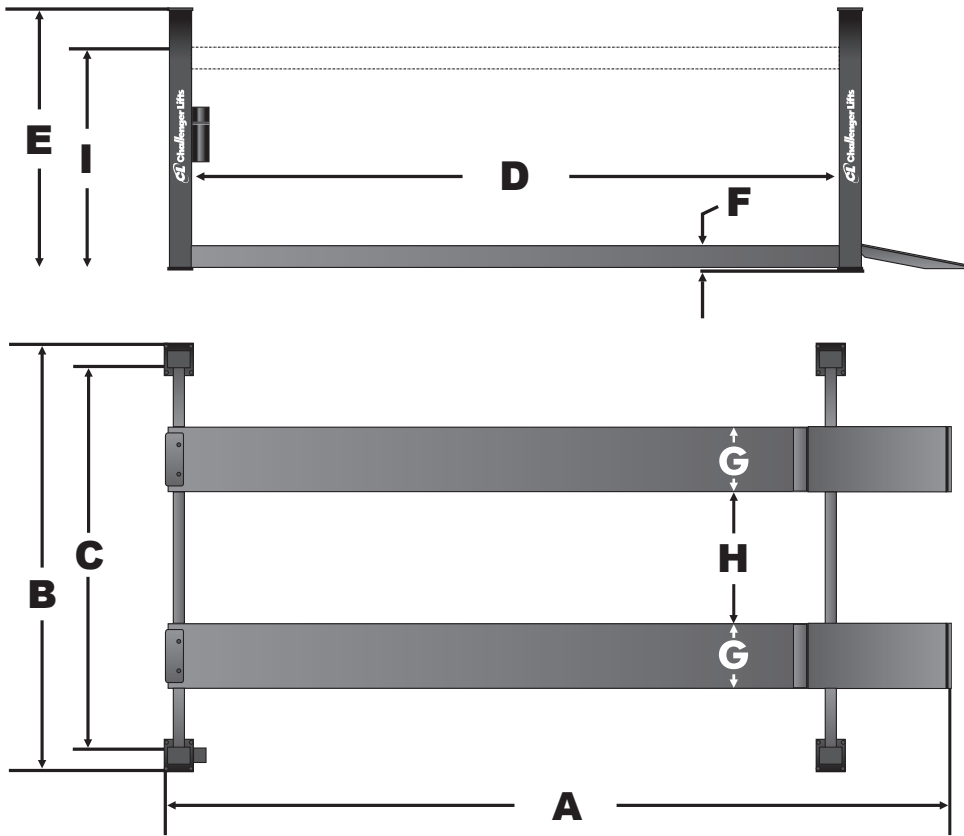
RAMPS

36" aluminum ramps are standard with option to upgrade to 50" extended ramps for low-profile vehicles
CL4P9ER

CASTERS



Caster set (set of 4)
CL4P9CS



FEATURES & BENEFITS

- » Heavy-duty commercial grade design with rigid formed columns and runways for superior strength and dependability, yet light enough to move around the garage (with optional caster set)
- » 115v standard plug-in power unit with optional 220v version available
- » Versatile design allows it to be either free standing or bolted to the floor
- » Built-in runway rail system accommodates standard ramps and optional rolling jacks, jack trays, drip trays and storage platforms
- » Single hydraulic cylinder protected underneath runway
- » Large molecular composite slider blocks for minimal wear and maximum dependability

| MODEL | CL4P7 | CL4P9S | CL4P9X | CL4P9W |
|--|------------|----------------------------|------------|-----------|
| Lifting Capacity | 7,000 lbs. | | 9,000 lbs. | |
| A Overall Length | 16' 3.5" | 17' 5.5" | | 19' 5.5" |
| B Overall Width | 8' 4.5" | | 9' 4.25" | 10' 7.25" |
| C Inside Columns | 92.125" | | 95" | 110" |
| D Between Columns | 147.5" | 160.5" | | 184.75" |
| E Height of Columns | 6' 7.5" | 7' 0.5" | | 8' 0.5" |
| F Height of Runways | 5.75" | | 7" | |
| G Width of Runways | | | 20" | |
| H Width Between Runways | | | 38" | |
| I Rise Height | 68.125" | 73.25" | | 85.5" |
| Max. Wheelbase* | 141.5" | 155" | | 179" |
| Cross beam Clearance Height ¹ | 63" | 68" | | 80" |
| Motor / Voltage ² | | 1HP, 115v / 2HP, 220v | | |
| Speed of Rise | | 120 s (115v) / 60 s (220v) | | |
| Min. Recommended Bay Size | 10' x 20' | | 11' x 22' | 14' x 22' |

* Maximum wheelbase is based on a tire diameter of 30" ¹ Height to bottom of cross beam measured with lift sitting in highest lock position ² Optional 220v power (provides 60 second rise time) available. Must be specified at time of order. Available in black only.

For more information, contact your Authorized Challenger Lifts Distributor:



2212 Camplain Rd., Hillsborough, NJ 08844

Call for Sales, Service, & Installation

www.fcilift.com **908.526.1500**

800-648-5438 | 502-625-0700 | Fax: 502-625-0711 | Email: sales@challengerlifts.com
2311 South Park Road | Louisville, KY 40219



AAIA
Automotive Aftermarket
Industry Association

